

Modern Day Princess Study Guide

Stéphanie, Hereditary Grand Duchess of Luxembourg



Born: Countess Stéphanie Marie Claudine Christine de Lannoy

18 February 1984 (age 36) in Ronse, East Flanders, Belgium

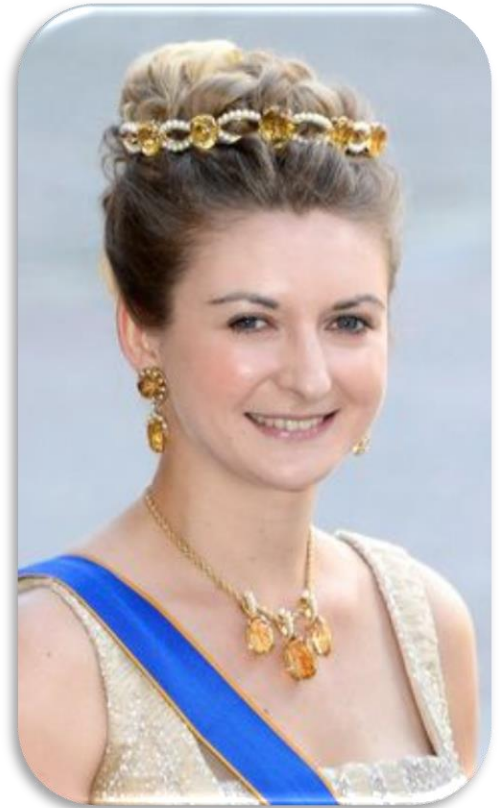
Spouse: Guillaume, Hereditary Grand Duke of Luxembourg (m. 2012)

Issue: Prince Charles

House: Lannoy

Father: Count Philippe de Lannoy

Mother: Alix della Faille de Leverghem



The family tree of Lannoy has many branches, one reaching into the United States. Princess Stephanie is distantly related to Franklin Delano Roosevelt.

Guillaume is Stéphanie's 7th cousin once removed.

They were married in a civil ceremony October 19, 2012 and the following day in a religious ceremony.



Websites

[The religious wedding of Guillaume & Stéphanie \(nettyroyalblog.nl\)](#)

[Luxembourg \(nettyroyal.nl\)](#)

[Stéphanie, Hereditary Grand Duchess of Luxembourg - Wikipedia](#)

[Guillaume, Hereditary Grand Duke of Luxembourg - Wikipedia](#)

Family



Left: Luxembourg's Royal Family

Right: Stephanie and her parents. She was the youngest of eight children of the Count and Countess de Lannoy.



The christening of Prince Charles
September 19, 2020



Homes/ Map



Fischbach Castle



Berg Castle
The Residence of the reigning Grand Duke, Henri

The couple also has a residence in London where they both are furthering their education.



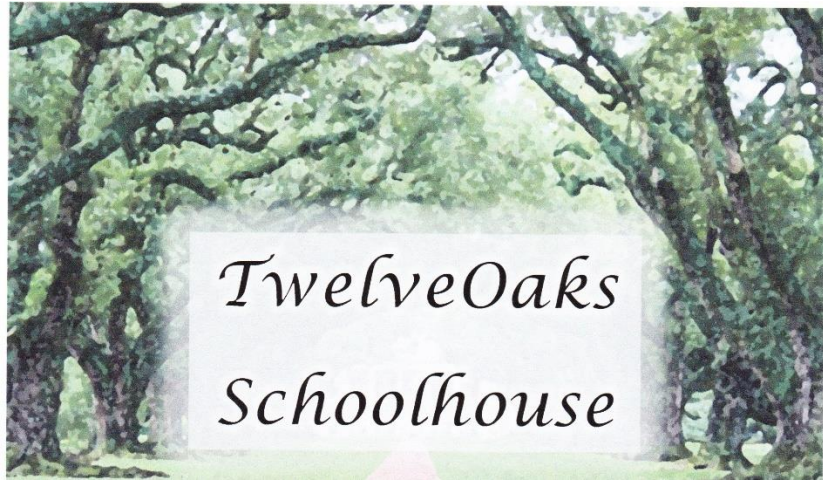
Discussion Questions

1. Where did Stephanie grow up? How many siblings does she have?
 2. How did Stephnie and Guillame meet?
 3. What types of charities is Stephanie involved in?
4. What happened in May of 2020 that changed Stephanie's life?

Activities

1. Make a family tree of the House of Lannoy.
2. Many Royal families from all over Europe live in London. Research which ones, make a list.
 3. Research Luxembourg. Write a report.
 4. Stephanie loves art. Go to an art museum.





Modern Day Princesses Study Guides – Stéphanie, Hereditary Grand Duchess of Luxembourg

Thank you for downloading the Princess Stephanie Guide. All of the curriculum on my website is intended for home use. There are Amazon Affiliated links on my site of any books or supplies I mention. If you decide to buy any of them, please use the links on my website. I take no credit for most of the images I use. It's either on-line clip art or pictures that I may or may not modify, or drawings from my son, Sky Bott. He asks that I mention his YouTube channel, MrSkyPanda. It's a family friendly channel. I'm especially proud of the CandyWorld Episodes.

If you really enjoy Twelve Oaks Schoolhouse curriculum and printables, consider donating on the website.

twelveoaksschoolhouse.com

Kendra Bott